



University of
Zurich^{UZH}

Psychometric
Society

IMPS 2017

Schedule



IMPS Registration & Information Desk Hours of Operation: Lichthof Hall (Floor D)

Time	Day
8:00 a.m. - 5:00 p.m.	Monday, July 17, 2017
7:30 a.m. - 5:45 p.m.	Tuesday, July 18, 2017
8:00 a.m. - 11:30 a.m.	Wednesday, July 19, 2017
8:00 a.m. - 4:30 p.m.	Thursday, July 20, 2017
8:00 a.m. - 4:45 p.m.	Friday, July 21, 2017

Monday, July 17

Time	Room KO2-F-180	Room KOL-F-101	Room KOL-F-118
9:30 a.m.	SHORT COURSE 1: <i>Causal Inference in Experiments and Observational Studies</i> Don Rubin	SHORT COURSE 2: <i>Dynamic Structural Equation Modeling of Intensive Longitudinal Data Using Mplus Version 8</i> Bengt Muthén, Tihomir Asparouhov, Ellen Hamaker	SHORT COURSE 3: <i>IRT in R</i> Thomas Rusch

11:00 a.m. - 11:20 a.m.	Short Course Refreshment Break - Floor F
12:50 p.m. - 1:50 p.m.	Short Course Lunch - Mensa Cafeteria
3:20 p.m. - 3:40 p.m.	Short Course Refreshment Break - Floor F
5:10 p.m.	End of Short Courses

6:30 p.m.	STUDENT MIXER - Panama Bar & Grill
-----------	------------------------------------

Tuesday, July 18 - Morning

Time	Room KOH-B-10
9:00 a.m. - 9:15 a.m.	Welcome Anders Skrondal, Gabriele Siegert, and Carolin Strobl
9:15 a.m. - 10:15 a.m.	Keynote Speaker: Peter Bühlmann <i>Heterogeneous Large-Scale Data: New Opportunities for Causal Inference and Prediction</i> Chair: Carolin Strobl

10:20 a.m. - 10:40 a.m.	GROUP PHOTO - Lichthof
10:40 a.m. - 11:00 a.m.	REFRESHMENT BREAK - Lichthof

Tuesday, July 18 - Morning - Parallel Sessions

Time	Room K02-F-180	Room KOL-F-101	Room KOL-F-118	Room KOL-F-104
11:00 a.m. - 12:30 p.m.	<i>Discussion Symposium: Psychometrics and Psychological Science</i> Chair: Paul De Boeck	<i>Symposium: How to Deal With DIF in Educational Surveys?</i> Chair: Robert Zwiwter	<i>CDM: Attribute Hierarchies and Longitudinal</i> Chair: Jimmy de la Torre	<i>IRT: Rater Effects</i> Chair: Andreas Frey
	De Boeck, P., van der Maas, H., Maydeu-Olivares, A., Strobl, C., Thissen, D., and Stern, E.	Glas, C. A.W., Punter, A., Meelissen, M. R. M. A Comparison of Three Methods for Modeling DIF	Köhn, H. F. Latent Attribute Space Identifiability and Q-Matrix Completeness for Cognitively Diagnostic Models With Attribute Hierarchies	Qiu, X. L., Wang, W. C. New Item Response Theory Models for Rater Errors
		Zwiwter, R. J., Glaser, S. S. F., Maris, G. On the Difference Between Modeling DIF and Correcting for DIF	Song, L., Wang, W., Ding, S. Bayesian Networks for Modeling the Uncertainty of Attribute Hierarchy	Kulon, F. Assessing Raters' Reliability Without Multiple Ratings
		von Davier, M. Invariance vs. Fit or Stability vs. Variability in International Assessments	Peng, Q. Latent Transition Analysis With Log-Linear CDM	Casabianca, J. Modeling Changes in Adolescents' Character With the Hierarchical Rater Model
		Maris, G., Bechger, T. A Network Perspective on Educational Surveys	Zhang, S., Chang, H. H. Multilevel Hidden Markov Model for Learning Under Cognitive Diagnosis Framework	Wang, J., Lu, Z., Engelhard, Jr., G. Evaluating Rater Judgments With Cross-Classified Multilevel IRT Models
			Chen, Y., Culpepper, S., Wang, S., Douglas, J. Bayesian Modeling for Learning Trajectories in Cognitive Diagnosis Models	Engelhard, Jr., G., Wang, J., Wind, S. Cognitive and Psychometric Perspectives on Rater Accuracy in Writing Assessment

Tuesday, July 18 - Morning - Parallel Sessions - continued

Time	Room KOL-F-121	Room KOL-F-117	Room K02-F-150	Room K02-F-152
11:00 a.m. - 12:30 p.m.	<i>Causal Inference</i> Chair: David Kaplan	<i>Model Fit: Bayesian and Simulation-Based</i> Chair: Jean-Paul Fox	<i>CFA and Generalizability Theory</i> Chair: Fan Wallentin	<i>Estimation</i> Chair: Wicher Bergsma
	Markus, K. A. Lewis, Rubin, Pearl: Compare and Contrast	Hojtink, H., van de Schoot, R. Testing Small Variance Priors Using Prior-Posterior Predictive P-Values	Ximenez, C. Recovery of Weak Factor Loadings When Adding the Mean Structure	Ebbes, P., Howell, J.R., Liechty, J. Gremlins in the Data: Identifying Information Content of Research Subjects
	Morell, M., Yang, J.S. A Latent Variable Modeling Approach to the Regression Discontinuity Design	Bainter, S. The Impact of Moderately Informative Priors on Ability to Detect Model Misfit	Kolbe, L., Jorgensen, T. D. Testing Measurement Bias in Restricted Factor Analysis Using Product Indicators	Draxler, C. Bayesian Inference Based on Conditional Likelihood Functions
	Keller, B., Zhang, T. CART-Based Methods for Variable Selection in a Conditional Independence Framework	Santos, K. C., de la Torre, J., von Davier, M. Resampling-Based Approaches for Person Fit Assessment in Cognitive Diagnosis Modeling	Soysal, S., Ankan, Ç. A. Examining the Cross-Cultural Applicability Via Generalizability Theory	Klaassen, F., Hoijtink, H. Staying in the Loop: Specifying Prior Probabilities
	Kim, J.S., Steiner, P. M., Suk, Y. A General Framework of Multilevel Matching Strategies for Clustered Observational Data	Böing-Messing, F., Mulder, J. Automatic Bayes Factors for Testing Equality and Inequality Constrained Hypotheses on Variances	Lu, Z., Gu, F. State Space Approach to Canonical Correlation Analysis	Costantini, G., Epskamp, S. The Fused Graphical Lasso for Computing Psychological Networks
Yung, Y. F. Causal Treatment Effect Analysis Using Two New SAS Procedures	Luo, Y. WAIC as a Model Selection Method for Polytomous Items		Mutz, R. Prediction or Production? A Bayesian Stochastic Frontier Structural Equation Approach	

12:30 p.m. - 1:30 p.m.

LUNCH - Mensa Cafeteria

Tuesday, July 18 - Afternoon - Parallel Sessions 1

Time	Room KOL-F-180	Room KOL-F-101	Room KOL-F-118	Room KOL-F-104
1:30 p.m. - 3:00 p.m.	<i>Symposium: Networks and Latent Variable Models: Equivalences, Distinctions and Combinations Chair: Sacha Epskamp</i>	<i>Symposium: Computerized Adaptive and Multistage Testing: Developments, Challenges, and Solutions Chair: David Magis</i>	<i>IRT: Fit and Diagnostics Chair: Johan Braeken</i>	<i>Longitudinal Data Analysis Chair: Tom Loeys</i>
	Kruis, J. Three Representations of the Ising Model	van Rijn, P. The Paradox of Adaptive Testing and Item Calibration	Kondrtek, B. Assessing Item Fit of Unidimensional IRT Model Using Plausible Values	Usami, S., Murayama, K., Hamaker E. L. A Unified Framework of Cross-Lagged Models
	Epskamp, S., Rhemtulla, M. Generalized Network Psychometrics: Combining Network and Latent Variable Models	Yan, D. A New Probability-Based Classification Method for MST	Liu, Y. Goodness of Fit Assessment for Restrict Re-Calibration of IRT Models	Miyazaki, Y. Evaluation of Quality Estimate for Change in Two-Wave Data
	van Bork, R., Rhemtulla, M. How to Think of Model Complexity?	von Davier, A. A. Routing and Scoring Issues in an MST Design	Falk, C. F., Monroe, S. Score Tests and Information Matrix Approximations for MIRT Under Misspecification	Tisak, J., Alessandri, G., Tisak, M.S. Several Approaches to the Modeling of Ephemeral Effects
	Hofman, A., Kievit, R., Visser, I., van der Maas, H. A Comparison of Latent Variable vs. Network Models Using Longitudinal Data	Magis, D., Yan, D., von Davier, A. A. mstR: An R Package to Generate Multistage Testing Designs	Serrano, D., Iaconangelo, C. RMSEA2-Based Power for IRT Models: Theoretical Derivation and Empirical Validation	Zheng, X., Yang, J.S. Parameter Estimation in Latent Growth Curve Item Response Models
		Lightvoet, R. On the Consistency of Latent Variable Models With the Observations	Ji, L., Chow, S.M. Stochastic Bivariate-Dual Change Score Model: Evaluation and Issues in Implementation	

Tuesday, July 18 - Afternoon - Parallel Sessions 1 - continued

Time	Room KOL-F-121	Room KOL-F-117	Room KOL-F-150
1:30 p.m. - 3:00 p.m.	<i>IRT Chair: George Engelhard Jr.</i>	<i>Measurement and Large Scale Assessment Chair: Rianne Janssen</i>	<i>Statistics Chair: Matthew Johnson</i>
	Merkle, E. Psychometric Models for Forecast Evaluation	He, Q., Shin, H. J., Lennon, M.L., Chen, H., von Davier, M. Producing a Reliable Collaborative Problem Solving Scale in PISA 2015	Grønneberg, S., Foldnes, N. Covariance Model Simulation Using Regular Vines
	Noventa, S., Stefanutti, L., Vidotto, G. Some Considerations on the Derivation of Logistic Item Response Theory Models	Zhu, R. Can Score Jump Threaten the Stability of Linking Scales?	Bergsma, W., Jamil, H. Regression Modelling With I-Priors
	Kelderman, H., Bakker, T. A GRM Where Parameters are Functions of a Continuous Variable	Kim, C. M., Lee, M. A Comparison of Methods of Subscoring With Unbalanced Item Structures	Giannerini, S., Goracci, G. Small Sample Asymptotics for Multinomial Goodness of Fit Tests
	Koopman, L., de Rooij, M.J., Zijlstra, B. J. H. Bias of Two-Level Scalability Coefficients and Their Standard Errors	Ali, U., Rios, J. Reporting Reliable Aggregate-Level Subscores	Vanbrabant, L. Informative Hypothesis Testing
Schmidt, K. M., Jung, K., Hwang, H., Meyer, J. P., Ryoo, J. H. Person Scoring in 2PL Model Between CB-IRT and FB-IRT	Yocarini, I., Bouwmeester, S., Jongerling, J. Comparing Different Standard Setting Methods in a Higher Education Context	Shiina, K., Kubo, S. Correlation Computation for Ratings Using the Idea of Pearson (1913)	

3:00 p.m. - 3:20 p.m.

REFRESHMENT BREAK - Floor F

Tuesday, July 18 - Afternoon - Parallel Sessions 2

Time	Room K02-F-180	Room KOL-F-101	Room KOL-F-118	Room KOL-F-104
3:20 p.m. - 4:50 p.m.	<i>Invited Symposium: Response Bias in International Large-Scale Assessments – Methodological Approaches</i> Chairs: Matthias von Davier & Lale Khorramdel	<i>CDM: CAT and Nonparametric</i> Chair: Gongjun Xu	<i>IRT: Local Dependence</i> Chair: Herbert Hoijtink	<i>Complex Models for Longitudinal Data</i> Chair: Sy-Miin Chow
	Khorramdel, L., von Davier, M., Pokropek, A. Mixture and Multi-Process IRTree Models for Measuring Response Styles	Chang, Y. P., Chiu, C.Y., Tsai, R.C. Computerized Adaptive Testing for Cognitive Diagnosis in Classroom: A Nonparametric Approach	Braeken, J. Bayesian Elastic Constraints to Screen and Model Local Item Dependencies	Karch, J., Brandmaier, A., Völkle, M. Gaussian Process Panel Modeling – A Unification of Longitudinal Modeling Approaches
	Meiser, T., Plieninger, H., Henninger, M. Modeling Response Styles With Ordinal and Multidimensional IRTree Models	Sorrel, M. A., Abad, F. J., Olea, J. Implications of Model Comparison on Cognitive Diagnosis Computerized Adaptive Testing	Yousfi, S. Considering Local Dependencies: Person Parameter Estimation for IRT Models of Forced-Choice Data	Schultzberg, M., Muthén, B. Subjects and Time Points Needed for Multilevel Time Series Analysis in MplusVersion8
	Primi, R. What Anchoring Vignettes Measure in Children Self-Reports?	Su, Y. H., Chang, H.H. Investigating the Constrained-weighted Item Selection Methods for CD-CAT	Jiao, H., Zhan, P. A Non-Compensatory Rasch Testlet for Items Embedded in Multiple Contexts	Liu, S. What Do We Gain and Lose by Using a Person-Specific Modeling Approach
	Pohl, S., von Davier, M. Using Response Times to Deal With Missing Responses Due to Time Limits	Xiong, J., Luo, F., Ding, S. A Cognitive Diagnosis Method Based on Mahalanobis Distance	Ip, E., Strachan, T., Ackerman, T., Fu, Y., Willse, J. Is a Test Sufficiently Unidimensional and Why 1D-IRT Will Not Work?	Kim, S., Lu, Z., Cohen, A. S. Topic Modeling for Longitudinal Text Data
	Pokropek, A., Khorramdel, L. A Flexible Mixture Modeling Approach to Correct Guessing Bias			

Tuesday, July 18 - Afternoon - Parallel Sessions 2 - continued

Time	Room KOL-F-121	Room KOL-F-117	Room K02-F-150	Room K02-F-152
3:20 p.m. - 4:50 p.m.	<i>Missing Data</i> Chair: Victoria Savdell	<i>Finite Mixture Models</i> Chair: Chun Wang	<i>Pacific Metrics Symposium: Adaptive Testing With Echo-Adapt</i> Chair: Wim van der Linden	<i>Multitway FA, PC, and Rotation</i> Chair: Marieke Timmerman
	Kaplan, D. Congenial Imputation for Designed Missing Data Using Plausible Values	Gnaldi, M., Bacci, S., Greiff, S., Kunze, T. Profiles of Students on Account of Complex Problem Solving Strategies	Choi, S., van der Linden, W. Shadow-Test Approach to Adaptive Testing and Its Generalization to Other Testing Formats	Kroonenberg, P. M. Cattell's Parallel Proportional Profiles: The Triumph of a Prodigal Rotation
	van Ginkel, J. F-Tests and Estimates for R2 for Multiple Regression in Multiply Imputed Datasets: A Cautionary Note on Earlier Findings	Ye, A., Harring, J. Three-Step Bias-Correction Methods for Auxiliary Variables in Longitudinal Mixture Modeling	van der Linden, W., Ren, H., Jiang, B. Adaptive Testing With Bayesian Parameter Updating and Optimal Design	Helwig, N. E. Multitway Factor Analysis With Functional and Structural Constraints
	Luningham, J. M., Lubke, G. H. Comparing Parametric and Non-Parametric Data Integration Methods	Di Mari, R., Bakk, Z. Latent Markov Modeling With Covariates in the Presence of Direct Effects		Mayekawa, S. I., Oki, Y., Yamamoto, Y., Yamashita, N. Factor Rotation to a Simple Structure With Prescribed Inter-Factor Correlation
	Kuha, J., Katsikatsou, M., Moustaki, I. Latent Variable Modelling With Non-Ignorable Item Nonresponse: Cross-National Analysis	Shang, Z. Identifying Latent Structures in Restricted Latent Class Models	Barrett, M. Adaptive Testing Simulation With Echo-Adapt	Kiers, H. A. L., Timmerman, M.E., Ceulemans, E. Rotation to Optimal Bi-Factor and Multi-Factor Structures
	Su, D. Planned Missing Data Designs in Large-Scale Assessments	Ling, H. K. A Graphical Latent Class Model for Multivariate Binary Data		Murakami, T. Orthonormal Polynomial Principal Component Analysis

4:50 p.m. - 5:00 p.m.

BREAK

Tuesday, July 18 - Evening

Time	Room KO2-F-180	Room KOL-F-101
5:00 p.m. - 5:45 p.m.	Invited Speaker: Ying (Alison) Cheng <i>Statistical Quality Control in Psychometrics</i> Chair: Terry Ackerman	State-of-the-Art Speaker: Dorret Boomsma <i>Psychometrics and Genetics</i> Chair: Irini Moustaki
Time	Room KOH-B-10	
5:50 p.m. - 6:20 p.m.	Dissertation Prize: Maria Bolsinova <i>Making the Most Out of Response Times: Moving Beyond Traditional Assumptions</i> Chair: David Thissen	
6:30 p.m. - 8:00 p.m.	Welcome Reception - Polyterrasse	



Polyterrasse, ETH Zurich

Wednesday, July 19 - Morning - Parallel Sessions

Time	Room K02-F-180	Room KOL-F-101	Room KOL-F-118	Room KOL-F-104
8:30 a.m. - 10:00 a.m.	<i>Symposium: iRtool: A New Set of Tools for Psychometricians</i> Chair: Timo Bechger	<i>ETS Symposium: Psychometric Research at Educational Testing Service</i> Chair: Kadriye Erçikan	<i>Symposium: ANACONDA: Analysis of Conditional and Average Causal Effects</i> Chair: Rolf Steyer	<i>Estimation: Categorical-Response LV Models</i> Chair: Myrsini Katsikatsou
	Partchev, I. Dexter: Classical Test and Item Analysis Using the Interaction Model	Erçikan, K. Overview of Psychometric Research at ETS	Steyer, R. ANACONDA – Analysis of Conditional and Average Causal Effects: Introduction	Barendse, M., Rosseel, Y. On the Use of Pairwise Likelihood Estimation for Clustered Data
	Kamphuis, F. Enorm: Bayesian Analysis With the Extended Nominal Response Model	Zwrick, R. Using Constrained Optimization to Promote Academic Excellence and Student Diversity in University Admissions	Neudecker, A., Kappler, G., Steyer, R. Standard Errors of Adjusted Probabilities of Success in Logistic Regression	Moustaki, I., Papageorgiou, I. Pairwise Likelihood Estimation Based on a Sample of Pairs
	Bechger, T. Roger: Enter Student Abilities	Casabianca, J. M. Using Item Response Theory Models to Detect and Correct for Rater Effects in Test Scores	Plötner, J., Steyer, R. ANACONDA With a Latent Outcome Variable Measured by Binary Variables	Müller-Platz, M., Kateri, M., Moustaki, I. Approximate Maximum Likelihood Estimation for IRT Models With Dichotomous Items
	Koops, J. 3DC: Using iRtools in Standard Setting	van Rijn, P., Ali, U. A Generalized Speed-Accuracy Response Model for Dichotomous Items	Sengewald, M. A., Pohl, S., Steiner, P. M., Steyer, R. Latent Covariates for Identifying the Average Treatment Effect	Andersson, B. Estimation of Latent Regression IRT Models Using the Laplace Approximation
		Sinharay, S. Detecting Test Fraud: Erasure Analysis, Detection of Item Preknowledge, Person-Fit Analysis and More		Cagnone, S. Latent Variable Models for the Analysis of Cognitive Functioning Over Time

Wednesday, July 19 - Morning - Parallel Sessions - continued

Time	Room KOL-F-121	Room KOL-F-117	Room K02-F-150	
8:30 a.m. - 10:00 a.m.	<i>IRT: Forced Choice and Faking</i> Chair: Saïr Youssi	<i>Reliability I</i> Chair: Klaas Sijtsma	<i>EFA & Classification and Regression Trees</i> Chair: Henk Kiers	
	Chen, J. H., Chao, H. Y., Chen, C. C., Shih, C. L. A Forced-Choice Model for Enhancing Interpersonal Comparisons	Johnson, M. S. Information Gain and Informational Correlation as Measures of Reliability	Adachi, K., Trendafilov, N. Matrix Results for Elucidating the Essence of Factor Analysis	
	Kreitchmann, R. S., Morillo, D. An Optimization Procedure for Assembling Multidimensional Forced-Choice Blocks	van der Ark, A., Jorgensen, T. Planning Inter-Rater Reliability Studies	Nieto, M. D. Assessing Dimensionality of Bifactor and Second-Order Models With Parallel Analysis	
	Brown, A. Modelling Faking Behaviour in High-Stakes Personality Assessments	Smits, N., Conijn, J. M. Measurement Versus Prediction in Test Construction	Brodersen, A., Cheng, Y. Modified Parallel Analysis for Data With Planned Missingness	
	Sun, L., Luo, F., Liu, H. Application of Thurstonian IRT Model in the Development of Fake-Resistant Forced-Choice Questionnaires	Du, H., Wang, L. Reliabilities of Intraindividual Variability Indicators With Autocorrelated Longitudinal Data	Lee, C. Variable Importance Measures From Random Forests and Bayesian Model Averaging	
	Gu, Z., Emons, W. H. M., Sijtsma, K. On the Fallacies About and the Usefulness of Change Scores	Philipp, M., Rusch, T., Hornik, K., Zelleis, A., Strobl, C. Assessing the Stability of Trees and Other Statistical Learning Results		

10:00 a.m. - 10:20 a.m.

REFRESHMENT BREAK - Lichthof

Wednesday, July 19 - Morning

Time

Room
KOH-B-10

10:20 a.m. - 11:20 a.m.

Keynote Speaker:
Don Rubin
Disentangling Active Treatment Effects from Placebo Effects in Randomized Double-Blind Trials
Chair: Sophia Rabe-Hesketh

11:30 a.m.-7:30 p.m.

EXCURSION



Rhine Falls



Wörth Castle on the Rhine River



Schaffhausen

Thursday, July 20 - Morning - Parallel Sessions

Time	Room KOL-F-180	Room KOL-F-101	Room KOL-F-118	Room KOL-F-104
8:30 a.m. - 10:00 a.m.	<i>Invited ILD Symposium: Intensive Longitudinal Data: Past, Present, and Future Chairs: Ellen Hamaker & Ted Walls</i>	<i>CDM: Q-Matrix Inference Chair: Hok Kan Ling</i>	<i>CAT Chair: Ying (Alison) Cheng</i>	<i>Symposium: Missing Data in Large-scale Educational Assessments Chair: Tyler Matta</i>
	Hamaker, E. A Brief History of Dynamic Modeling in Psychology	Culpepper, S. A., Chen, Y. Bayesian Estimation of the Reduced Reparameterized Unified Model Q-Matrix	Chang, H. H., Wang, S. Some Promising Advancements Concerning CAT Foundations and Implementations	Rutkowski, L., Matta, T. Design and Treatment of Missing Auxiliary Data in Large-Scale Assessments
	Völkle, M. Time Stops for No One: A Continuous Time Perspective on Dynamic Modeling	Wang, W., Song, L., Ding, S. An Exploratory Discretized Factor Loading Method for Q-Matrix Specification	Reckase, M. D., Ju, U., Kim, S. Indicators of the Amount of Adaptation by Computerized Adaptive Tests	Robitzsch, A., Lüdtke, O. An Item Response Model for Omitted Responses in Performance Tests
	Tuerlinckx, F. Dynamical Models for Intensive Longitudinal Data	Fang, G. On the Identifiability of Diagnostic Classification Models	Chao, H. Y., Chen, J. H. A Dynamic Stratification Method for Improving Trait Estimation in CAT	Grund, S., Lüdtke, O., Robitzsch, A. Imputation of Missing Data at Level 2 Using Plausible Values
	Walls, T. New Directions in Intensive Longitudinal Data Analysis	Bai, Y., Ma, W., de la Torre, J. Alternative Implementations of the GDI Q-Matrix Validation Procedure	Frey, A., Mikolajetz, A. Measuring Non-Compensatory Multidimensional Structures With Computerized Adaptive Testing	Matta, T. Assessing Missing Data Assumptions Using Posterior Predictive Checks
		Ding, S., Luo, F., Wang, W. Xiong, J. Different Expressions of a Knowledge State and Their Applications	Hsu, C. L., Wang, W. C. Item Selection in Multidimensional Adaptive Testing for Noncompensatory IRT Models	

Thursday, July 20 - Morning - Parallel Sessions - continued

Time	Room KOL-F-121	Room KOL-F-117	Room KOL-F-150	
8:30 a.m. - 10:00 a.m.	<i>ACT Symposium: The Role of Testing Organizations in Promoting Psychometric Research Chairs: Alina von Davier & Terry Ackerman</i>	<i>Guessing and Indecision Chair: Allison Ames</i>	<i>SEM: H-Likelihood & Ridge Estimation Chair: Silvia Cagnone</i>	
	Ackerman, T., Maris, G., de la Torre, J., van der Linden, W. and von Davier, A.	Wu, Q., De Laet, T., Lewyllie, C., Janssen, R. Simulating Response Patterns in Multiple-Choice Questions	Lee, Y. Factor Analysis With Ordinal Data: An H-Likelihood Approach	
		Giordano, S., Colombi, R. Responding to Rating Questions With Inaccuracy: A Multivariate Mixture Model	Jin, S. Robust Nonlinear Structural Equation Modelling Using Double Hierarchical Likelihood	
		Fariña, P. Parameters Interpretation and a Selection Test for the 1PL-G Model	Wallentin, F. Nonlinear Structural Equation Modelling With Hierarchical Likelihood Estimation	
		Katsikatsou, M., Kuha, J., Butt, S., Skinner, C. The Effect of Probing "Don't Know" Responses on Measurement Quality	Yang, M., Yuan, K. H. Optimizing Tuning Parameter in Ridge Generalized Least Squares for Structural Equation Modeling	
			Jiang, G., Yuan, K. H. Improving Parameter Estimates for Factor Analysis of Ordinal Data	

Thursday, July 20 - Morning

Time	Room KO2-F-180	Room KOL-F-101
10:05 a.m. - 10:50 a.m.	Invited Speaker: Marie Wiberg <i>Optimal Scoring as an Alternative to IRT and Sum Scoring</i> Chair: Wim van der Linden	State-of-the-Art Speaker: Tom Snijders <i>Network Analysis: Goodbye to Independence Assumptions</i> Chair: Carolyn Anderson

10:50 a.m. - 11:10 a.m.

REFRESHMENT BREAK - Floor F

Time	Room KO2-F-180	Room KOL-F-101
11:10 a.m. - 11:55 a.m.	Invited Speaker: Han van der Maas <i>Psychometrics for Complex Systems</i> Chair: Francis Tuerlinckx	State-of-the-Art Speaker: Victoria Savalei <i>SEM, Robust Corrections, and Missing Data</i> Chair: Alberto Maydeu-Olivares

12:00 noon - 12:30 p.m.

Business Meeting
 Chair: Carolyn Anderson (Secretary)

12:30 p.m. - 1:30 p.m.

LUNCH - Mensa Cafeteria

Thursday, July 20 - Afternoon

Time	Room KOH-B-10
1:30 p.m. - 2:30 p.m.	Keynote Speaker: Ulf Böckenholt <i>Item-Response Models for the Analysis of Self-Reports</i> Chair: Dan Bolt

2:30 p.m. - 2:50 p.m.

REFRESHMENT BREAK - Floor F

Thursday, July 20 - Afternoon - Parallel Sessions 1

Time	Room KOL-F-180	Room KOL-F-101	Room KOL-F-118	Room KOL-F-104
2:50 p.m. - 4:20 p.m.	<i>ILD Symposium: Recent Extensions to Autoregressive Models in Psychology</i> Chair: Casper Albers	<i>Invited Symposium: The Replicability Crisis: Diagnosis, Etiology, and Treatments</i> Chair: Jelte Wicherts	<i>Symposium: Psychometrics for NextGen Educational Assessments</i> Chair: Alina von Davier	<i>CDM: Classification Accuracy and Misspecification</i> Chair: Chanho Park
	Albers, C., Bringmann, L. Modelling Smooth and Sudden Changes in Temporal Dynamics of (V)AR-Models	Crompvoets, E. A. V., Wicherts, J. M. Replicability of Structural Equation Modeling and the Availability of Syntaxes	Maris, G. Network Time: Network Models for Response Time and Accuracy	de la Torre, J., Sorrel, M. A. Attribute Classification Accuracy Improvement: Monotonicity Constraints on the G-DINA Model
	Schuurman, N. Measurement Error and Person-Specific Reliability in Multilevel Autoregressive Models	Hoekstra, R., Monden, R., van Ravenzwaaij, D., Wagenmakers, E. J. Bayes and Nonsignificant Findings: A Solution for the Replication Crisis	Halpin, P. F. A Random-Effects Extension of the Hawkes Process	Iaconangelo, C. Generalizing Indices of Classification Accuracy for Cognitively Diagnostic Assessments
	Chow, S., Tang, N., Ibrahim, J.G., Zhu, H. Bayesian Sensitivity Analysis of Dynamic Factor Analysis Models With Nonignorable Missingness	Wicherts, J. Why Replications Fail	Ou, L., Chow, S. M. The Estimation of the Nonlinear Mixed-Effects Continuous-Time Models	Prendez, J. The Effect of Minor Q-Matrix Misspecification in Cognitive Diagnosis Models
	Ryan, O., Hamaker, E. Interpretation and Identification of Path-Specific Effects in CT-VAR(1) Models	Böckenholt, U. Multilevel Multivariate Meta-Analysis With Application to Choice Overload	Chopade, P., Hao, J., Zhu, M., Polyak, S. NLP and Data Mining Methods for Performance Assessments	Sun, Y., Santos, K.C., Sorrel, M.A., de la Torre, J. Identifying Poor-Fitting Items Using Limited- Information Statistics for CDM
	Kuiper, R. Studying Time-Lagged Effects: To Be Continued or to Be Considered			Liaw, Y. L., Thummaphan P. Investigate Differential Item Functioning Under DINA and G-DINA Models

Thursday, July 20 - Afternoon - Parallel Sessions 1 - continued

Time	Room KOL-F-121	Room KOL-F-117	Room KOL-F-150	
2:50 p.m. - 4:20 p.m.	<i>IRT: Response Style and Fatigue</i> Chair: Kensuke Okada	<i>Equating and Norming</i> Chair: Jorge Gonzalez	<i>Reliability II</i> Chair: Niels Smits	
	Bandalos, D. L., Hedeker, D. Use of the Mixed-Effects Location-Scale Model to Detect Inconsistent Responding	Chan, V. W., Gunn, G., Sitarenios, G. CEFI AdultTM: Generalized Additive Model vs. Generalized Linear Model Scoring	Xie, Q., Wu, Y. F. Investigating Psychometric Properties of Composite Scores With Multivariate Generalizability Theory	
	Ames, A., Curtis, N., Holzman, M. Detecting Rater Fatigue Using Change Point Analysis	Voncken, L., Albers, C. J., Timmerman, M. E. Uncertainty in Normed Test Scores Due to Sampling Variability	Lee, W. C., Chang, K. F., Zhang, M., Malatesta, J. Composite Score Reliability Indices for Mixed-Format Tests That Contain Testlets	
	List, M. K., Robitzsch, A., Lüdtke, O., Köller, O., Nagy, G. Performance Decline in Educational Assessments: Different Mixture Modeling Ap- proaches	Benton, T. Can Artificial Intelligence Learn to Equate?	Kim, H. J. Reliability of Multistage Tests Using Generalizability Theory	
	Plieninger, H., Heck, D. W. An Acquiescence Model at the Interface of Psychometrics and Cognitive Psychology	Wallin, G., Häggström, J., Wiberg, M. Optimal Bandwidth Selection in Kernel Equating for Different Test Types	Li, D., Yi, Q., Andrews, B. Rater Agreement Indices for Large-Scale Writing Assessments	
	Jin, K. Y., Wang, W. C. A New Rasch Facets Model for Rater's Centrality/Extremity Response Style		Arai, S., Miyano, H. Comparison of Scoring Methods for Multiple-Choice Items	

4:20 p.m. - 4:30 p.m.

BREAK

Thursday, July 20 - Afternoon - Parallel Sessions 2

Time	Room KOL-F-180	Room KOL-F-101	Room KOL-F-118	Room KOL-F-104
4:30 p.m. - 6:00 p.m.	<i>ILD Symposium: Networks in Psychology: Recent Developments</i> Chair: Laura Bringmann	<i>Public Lecture: After the PISA 2000 Debacle in Switzerland: Lessons Learned and Measures Taken</i> Chair: Carolin Strobl (Ends at 5:30 p.m.)	<i>Invited Symposium: Response Times for Measurement and Understanding</i> Chair: Paul De Boeck	<i>DIF and Measurement Invariance</i> Chair: Edward Ip
	Timmerman, M., Bringmann, L. The Process Factor Model as a Framework for Network Building	Speakers: Tomasik, M. & Berger, S.	Molenaar, D., Bolsinova, M. Hidden Markov Mixture Modeling of Responses and Categorized Response Times	Ackerman, T., Ip, E., Chen, S. H., Fu, Y., Strachan, T. Investigating DIF Using the IRT Projective Model
	Bringmann, L., Ferrer, E., Hamaker, E. L., Borsboom, D., Tuerlinckx, F. Inferring Changing Networks With Time Varying Vector Autoregressive Models		Wang, C., Xu, G., Shang, Z. Detecting Aberrant Behavior and Item Pre- Knowledge: Mixture Modeling vs. Residuals	Wei, D., Zhang, D., Liu, H. A Multidimensional Testlet Response Model for DIF and DTLF Detecting
	Cabaço, T., Epskamp, S., Völkle, M., Schmiedek, F. Time, Dynamics and Psychology Using the Gaussian Graphical Model		Goldhammer, F., Kroehne, U., Steinwascher, M. Mixed Effects Modelling of Differences in the Speed-Accuracy Tradeoff Function	Gürer, C., Draxler, C. Penalized Conditional Likelihood: Improving Recent DIF-Detection Methods
	Kossakowski, J., Waldorp, L., van der Maas, H. L. J. Transforming Mutations into Models: Inferring Causal Networks from Experimental Data		De Boeck, P. Interwovenness of Response Time and Response Accuracy in Cognitive Tests	Martinkova, P., Drabinova, A. Detection of DIF Based on Non-IRT Generalized Regression Approaches
	Tio, P., van Deun, K., Waldorp, L. Estimating Cross-Source Relationships From Big Data Using Component- and Networks-Analysis			Jorgensen, T. D., Kite, B. A., Chen, P. Y. Permutation Tests of Measurement Equivalence With Binary and Ordinal Indicators

Thursday, July 20 - Afternoon - Parallel Sessions 2 - continued

Time	Room KOL-F-121	Room KOL-F-117	Room KOL-F-150	Room KOL-F-152
4:30 p.m. - 6:00 p.m.	<i>IRT: Multidimensional and Equating</i> Chair: Dries Debeer	<i>SEM: Estimation and Inference</i> Chair: Shaobo Jin	<i>Clustering</i> Chair: Hans-Friedrich Köhn	<i>Unfolding</i> Chair: Andries van der Ark
	Draney, K., Feuerstahler, L., Kriener-Althen, K., Wihardini, D., Xia, T. Issues in Applying Multidimensional Item Response Models	Huang, P. A Penalized Likelihood Method for Multi- Group Structural Equation Modeling	Belov, D., Wollack, J. Graph Theory Approach to Detect Test Collusion	Roberts, J., Meyer, R., King, D. Dimensionality Misspecification in the Multidimensional Generalized Graded Unfolding Model (MGGUM)
	Yang, J. S., Morell, M., Im, H., Wigfield, A., Muenks, K. Small-Sample MIRT Calibration and Model Selection Using the Grit Data	Tong, X. How to Handle Outlying Observations in SEM: Deletion or Robust Methods?	Li, J., Adachi, K. Cross Data Biclustering for Multiple Matrices of Different Sizes and Sources	Flore, G., Heiser, W., de Rooij, M. DIF and Violations of Local Independence in Unfolding Models
	Strachan, T., Ip, E., Fu, Y., Chen, S., Ackerman, T. Misspecification of the MIRT Model in Higher-Dimensional Projective IRT	Dudgeon, P. Robust Confidence Intervals for Structural Equation Modelling With Improved Robustness	Kampert, M., Meulman, J., Friedman, J. New Features in Clustering Objects on Subsets of Attributes (COSA)	King, D., Roberts, J. Modified MH-RM for Efficient Estimation of the Multidimensional GGUM
	Lee, G., Park, I., Lee, M., Lee, E., Kang, H. Several MIRT Models for Equating of Testlet-Based Test Scores	Schaffland, T., Kelava, A., Kohler, M., Krzyzak, A. Nonparametric Estimation of a Latent Variable Model	Yamashita, N., Adachi, K. SPARK: A New Clustering Algorithm for Obtaining Sparse and Interpretable Centroid	Tendeiro, J., Meijer, R. Unfolding IRT Models: Do They Always Fit When Expected?
	Lee, W., Kim, S., Malatesta, J. Equity Property in MIRT Equating	Chen, L., Savalei, V. Two-Stage Estimator for Item-Level Missing Data in Linear Regression		Joo, S., Lee, P.S., Stark, S. Information Functions for the GGUM-RANK Multidimensional-Forced-Choice Model

6:15 p.m. - 8:00 p.m.

Poster Reception - Lichthof

Friday, July 21 - Morning - Parallel Sessions

Time	Room KOL-F-180	Room KOL-F-101	Room KOL-F-118	Room KOL-F-104
8:30 a.m. - 10:00 a.m.	<i>Invited Symposium: Big Data Analysis in Cognitive Assessment and Latent Variable Models</i> Chair: Jingchen Liu	<i>DIF: Country-Level and Bayesian</i> Chair: Steven Culpepper	<i>SEM: Fit and Model Selection</i> Chair: Jouni Kuha	<i>IRT: Equating</i> Chair: Marie Wiberg
	Chen, Y., Li, X., Liu, J., Xu, G., Ying, Z Exploratory Item Classification Via Spectral Graph Clustering	Fox, J. P. Marginal Measurement Invariance Testing Using Bayes Factor	Maydeu-Olivares, A., Shi, D., Rosseel, Y. Assessing Fit in Structural Equation Models: A Monte-Carlo Evaluation of RMSEA vs. SRMR Confidence Intervals and Tests of Close Fit	Weissman, A. Incorporating Information Functions in IRT Scaling
	Revelle, W. Using MMCAR to Explore the Structure of Personality and Ability	Köhler, C., Hartig, J., Naumann, A. Using Multilevel Logistic Regression to Detect Item Difficulty Variance Between Random Groups	Cheng, C., Wu, H. Confidence Intervals of Fit Indices by Inverting a Bootstrap Test	Trierweiler, T., Lewis, C., Smith, R. Reducing Conditional Error Variance Differences in IRT Scaling
	Li, X. Optimal Item Selection and Stopping for Computerized Adaptive Testing	Okada, K., Hojo, D. Model Comparison in Bayesian Item Response Models for Anchoring Vignettes	Hayakawa, K. Corrected Goodness-of-Fit Test in Covariance Structure Analysis	Sansivieri, V., Matteucci, M. Bayesian Ability Estimation in IRT Equating With NEC Design
	Liu, J. Analysis of Local Dependence for Latent Variable Models	Zeigenfuse, M., Strobl, C. A Hierarchical Bayesian Framework for Trait Measurement When Items Might Have DIF Desa, D. A Monte Carlo Study on Bayesian Measurement Invariance and Non-Invariance (MINI)	Foldnes, N., Grønneberg, S. New Testing Procedures for Structural Equation Modeling	Gonzalez, J., San Martin, E. An Alternative View on the NEAT Design in Test Equating Battaaz, M. Simultaneous Equating of Multiple Forms

Friday, July 21 - Morning - Parallel Sessions - continued

Time	Room KOL-F-121	Room KOL-F-117	Room KOL-F-150	
8:30 a.m. - 10:00 a.m.	<i>Complex Dynamic Models</i> Chair: Peter Halpin	<i>Symposium: IRT is Just Another Network Model</i> Chairs: Lourens Waldorp & Maarten Marsman	<i>Meta-Analysis and Replicability</i> Chair: Melanie Wall	
	Driver, C., Völkl, M. Hierarchical Bayesian Continuous Time Dynamic Modelling	Marsman, M., Borsboom, D., Kruis, J., Epskamp, S., Waldorp, L., Maris, G. Relating Ising Network Models to Item Response Theory	van Aert, R. C. M., van Assen, M. A. L. M. Estimating Replicability of Science by Taking Statistical Significance Into Account	
	Liu, Y. Bayesian Nonparametric Dynamic Item Response Model With Shape Constraints	Anderson, C. Network Multidimensional Item Response Models: Beyond Simple Structure	Augusteijn, H.E.M. The Effect of Publication Bias on the Assessment of Heterogeneity	
	Hu, Y., Stephenson, K. Phase Problem: An Example From Caffeine Consumption and Sleep Duration	Chen, Y. A Fused Latent and Graphical Model for Item Response Analysis	Dusseldorp, E., Li, X., Meulman, J. A New Approach to Moderation in Meta-Analysis: Meta-CART	
	Chen, M., Chow, S. Continuous-Time Models With Time-Varying Parameters	Wermuth, N. On the Symmetric Quadratic Exponential Distribution	Doebler, P., Doebler, A. Meta-Analytic Comparison of Latent Means via Logit Percent Correct Scores Cheng, Y., Li, J., Waisman, R. Bootstrapping: Enhancing Successful Replication of Effect Size Estimates	

10:00 a.m. - 10:20 a.m.

REFRESHMENT BREAK - Floor F

Friday, July 21 - Morning

Time	Room KO2-F-180	Room KOL-F-101
10:20 a.m. - 11:05 a.m.	Invited Speaker: Norman Verhelst <i>Profile Analysis: A Generalization of DIF Analysis</i> <i>Chair: Paul De Boeck</i>	State-of-the-Art Speaker: J.R. Lockwood <i>Value-Added Modeling</i> <i>Chair: Jee-Seon Kim</i>

Time	Room KOH-B-10
11:10 a.m. - 12:10 p.m.	Career Award For Lifetime Achievement: Willem Heiser <i>Early Psychometric Contributions to Gaussian Graphical Modelling: A Tribute to Louis Guttman</i> <i>Chair: Ulf Böckenholt</i>

12:10 p.m. - 1:10 p.m.	LUNCH - Mensa Cafeteria
------------------------	-------------------------



University of Zurich

Friday, July 21 - Afternoon - Parallel Sessions

Time	Room KOL-F-180	Room KOL-F-101	Room KOL-F-118	Room KOL-F-104
1:10 p.m. - 2:40 p.m.	<i>Invited Symposium: Never Waste a Good Crisis: Towards Responsible Data Reproducibility, Transparency and Management</i> Chair: Klaas Sijtsma	<i>Symposium: Recent Developments of Item and Person Fit Measures in IRT</i> Chairs: Carmen Köhler & Janine Buchholz	<i>CDM: Extensions and Alternatives</i> Chair: Guanhua Fang	<i>Symposium: Recent Developments of Predictive Modeling in Psychology and Related Areas</i> Chair: Heungsun Hwang
	Moustaki, I. How Has the New Policy of Data Reproducibility Affected Research Published in Psychometrika?	Buchholz, J., Hartig, J. Group-Level Item-Fit Statistics for the Analysis of Invariance	Park, C., Cho, S. A Cognitive Diagnosis Mixture Model for Learners Applying Different Test-Taking Strategies	Hayes, T., McArdle, J. An Initial Test of CART-Based Missing Data Methods
	Wicherts, J. Improving Reproducibility by Archiving and Sharing Our Research Data	Köhler, C., Robitzsch, A., Hartig, J. Bias Correction of the RMSD Item Fit Statistic Using Bootstrap	Liao, M., Jiao, H. A Cross-Classified Diagnostic Classification Model for Dual Local Item Dependence	Kim, S., Hwang, H. Recursive Partitioning of Extended Redundancy Analysis
	Tuerlinckx, F., Steegen, S., Gelman, A., Vanpaemel, W. Increasing Transparency Through a Multiverse Analysis	Tijmstra, J., Bolsinova, M. Bayes Factors for Testing Latent Monotonicity in Polytomous IRT Models	Lim, Y., S. Hierarchical Rater Model in Cognitive Diagnosis	Ryoo, J. H., Bradshaw, C., Kush, J. Propensity Score Analysis Using Super Learner for Longitudinal Data
	Sijtsma, K. Statistics Playing With Researchers: Policy to Prevent Questionable Research Practices	Spoden, C. Person Fit Analysis and Robust Estimation Methods	Xu, G. Partial Mastery Models for Cognitive Diagnosis	Guillemot, V., Beaton, D., Löfstedt, T., Gloaguen, A., Abdj, H. Variable and Individual Selection by Constraining the Singular Value Decomposition
		Bolt, D. Bifactor MIRT as a Basis for Diagnostic Score Reporting	Park, T., Kim, S., Choi, S., Kim, Y., Yoon, J. A Drug Response Prediction Model Using a Component-Based Structural Equation Modeling Method	

Friday, July 21 - Afternoon - Parallel Sessions - continued

Time	Room KOL-F-121	Room KOL-F-117	Room KOL-F-150	
1:10 p.m. - 2:40 p.m.	<i>CAT & Response Times</i> Chair: Dylan Molenaar	<i>Multilevel Modeling</i> Chair: Ed Merkle	<i>Finite Mixture Models & Eye Tracking</i> Chair: Sabrina Giordano	
	Xie, Q., Wu, Y., Gao, X. Investigating Item-Exposure Control in Shadow-Test Approach to Computerized Adaptive Testing	Josephy, H., Loeyes, T. Caution When Centering Lower Level Interactions in Multilevel Models	Su, H. Procedures for Multi-Factor Latent Class Parameter Estimation and Classification Accuracy	
	Debeer, D., Ali, U., van Rijn, P. Automated Test Assembly of Multidimensional Parallel Test Forms	de Fátima Salgueiro, M., Freguglia, R., Vieira, M. D. T. Inter-Industry Wage Differentials: A Structural Equation Modelling Approach	Magnus, B. The Contribution of Count Items to Health-Related Symptom Assessment	
	van Bebbler, J. Facilitating Screening for Psychopathology in Primary Health Care Settings: CATja	Loeyes, T., Talloen, W., Moerkerke, B. Testing the Upper-Level Exogeneity Assumption in Random Slope Models	Tein, J., Pelham, W., Mun, C. J., MacKinnon, D., Dishion, T. Misuse of Compplier-Average Causal Effect (CACE) Analysis With Non-Normal Data	
	Ulitzsch, E., Pohl, S., von Davier, M. A Dynamic Response Time Model for Speeded Tests	Wang, T., Merkle, E. Derivative Computations for Linear Mixed Effects Models With Applications	Visser, I., Raijmakers, M., van Renswoude, D. Circular Distribution Models for Saccade Directions	
Zhan, P., Jiao, H., Liao, D. Cognitive Diagnosis Modeling Incorporating Item Response Times	Ippel, L. Estimating Individual-Level Effects in Data Streams With Binary-Outcomes	van Renswoude, D., Raijmakers, M., Koornneef, A., Johnson, S., Hunnius, S., Visser, I. Gazepath: An Eye-Tracking Analysis Tool That Accounts for Measurement Error		

2:40 p.m. - 3:00 p.m.

REFRESHMENT BREAK - Lichthof

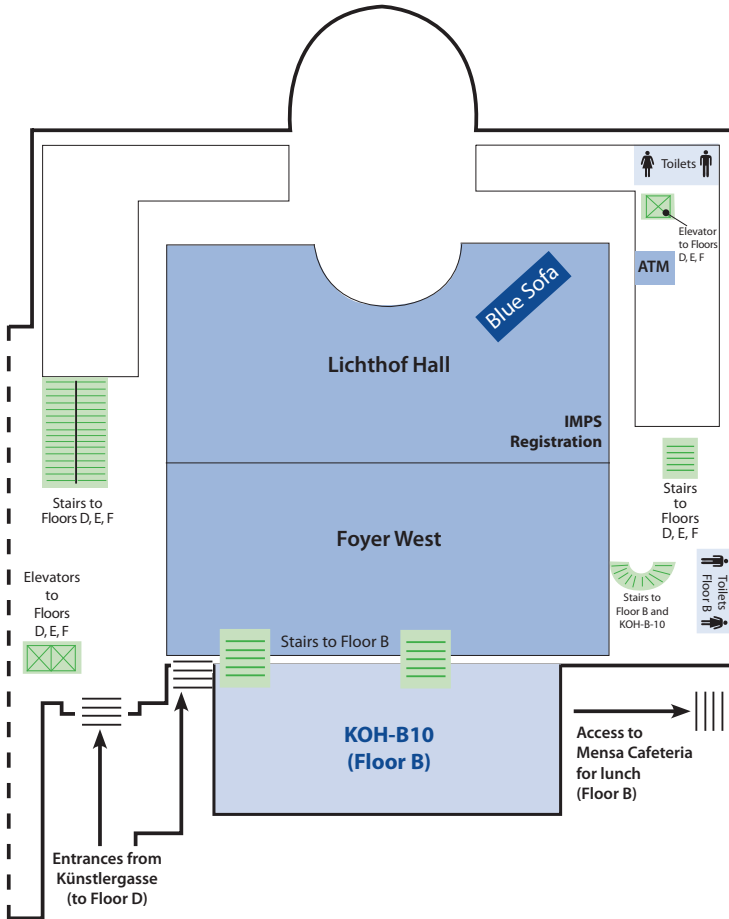
Friday, July 21 - Afternoon/Evening

Time	Room
3:00 p.m. - 3:45 p.m.	Room KOH-B-10 Early Career Award: Chun Wang <i>Methods for Resolving Measurement Error Problems in a Two-Stage Approach</i> <i>Chair: Hua-Hua Chang</i>
3:45 p.m. - 4:45 p.m.	Presidential Address: Anders Skrdal <i>The Role of Conditional Likelihoods in Latent Variable Modeling</i> <i>Chair: Cees Glas</i>
4:45 p.m. - 5:35 p.m.	Awards and Closing <i>Chair: Cees Glas</i>
7:00 p.m.	CONFERENCE BANQUET - Lake Side Restaurant

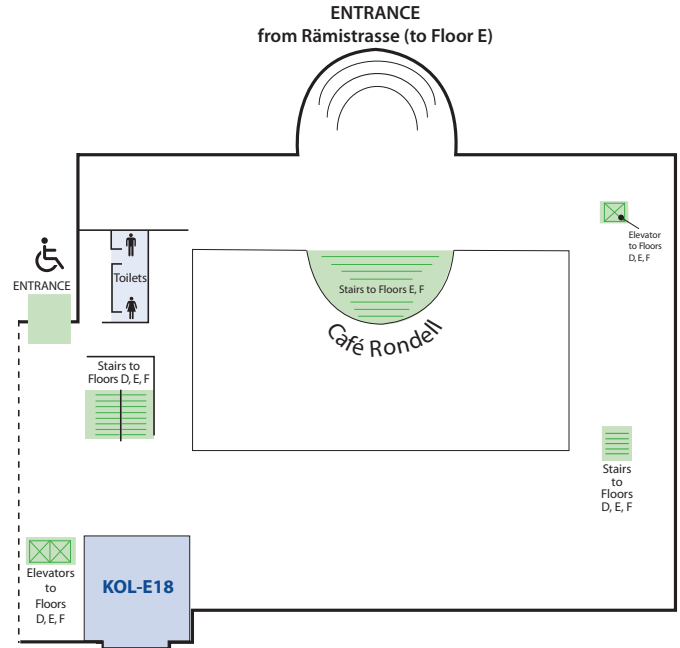


Lake Side Restaurant

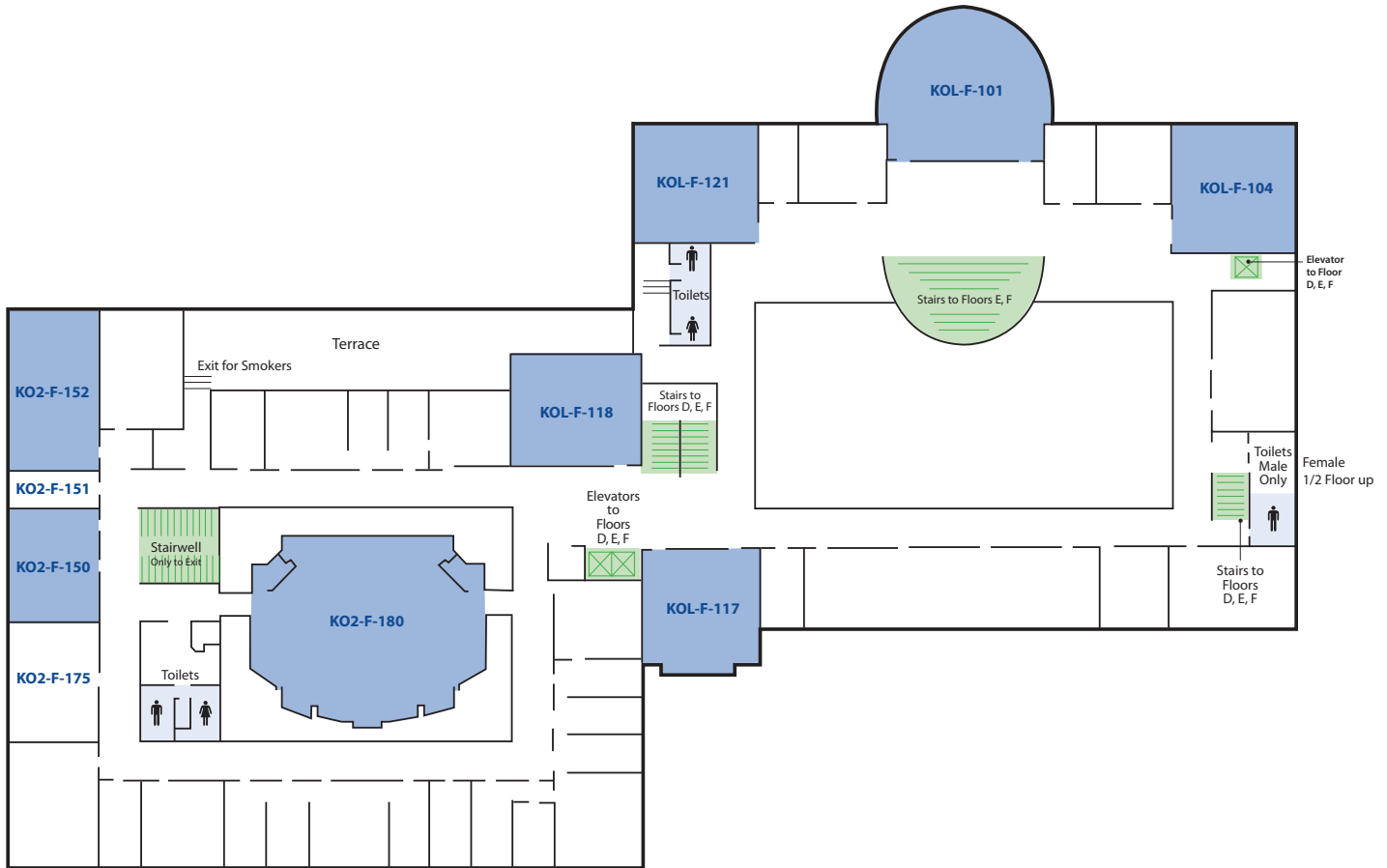
Floor D with Floor B (Basement)



Floor E



Floor F



Thank you to our generous sponsors!

SUPER SPONSORS



SWISS NATIONAL SCIENCE FOUNDATION



URPP Dynamics of Healthy Aging

CORECHED



BIÄSCHSTIFTUNG

LEVEL 1 SPONSORS



Listening. Learning. Leading.®



GRADUATE MANAGEMENT
ADMISSION COUNCIL



PACIFIC METRICS™
CORPORATION



University of
Zurich^{UM}

Hochschulstiftung



Stadt Zürich



Kanton Zürich

www.zhrcourses.uzh.ch

LEVEL 2 SPONSORS



eMetric



STATA®

STUDENT TRAVEL AWARD SPONSORS



Uio : CEMO
University of Oslo

Centre for Educational Measurement



Listening. Learning. Leading.®



ADDITIONAL SPONSORS

See you next year!

Mplus® Springer



VICTORINOX

SIGG®

CRC Press
Taylor & Francis Group
CHAPMAN & HALL

Pearson

WILEY